

# INTERNATIONAL MELGES 24 CLASS WORLD CHAMPIONSHIP

4<sup>th</sup> to 12<sup>th</sup> of August 2010  
Kalev Yacht Club  
Tallinn, Estonia

The International Melges 24 World Championship will be organised by the Kalev Yacht Club (KYC), in co-operation with Finnish/Estonia Melges 24 Class Association (FMF) and the International Melges 24 Class Association (IMCA).

## NOTICE OF RACE

### 1. RULES

- 1.1 The regatta will be governed by the rules as defined in *The Racing Rules of Sailing*.
- 1.2 No national authority prescriptions will apply.
- 1.3 The Equipment Rules of Sailing will apply.
- 1.4 If there is a conflict between languages the English text will take precedence.
- 1.5 Part 5, Section B of *The Racing Rules of Sailing*, as well as rules 44.1 and 63.1 will be changed in the Sailing Instructions to permit Protest Arbitration.

### 2. ADVERTISING

- 2.1 Advertising will conform to the current ISAF Regulation 20 and the Class Rules.
- 2.2 Boats may be required to display identification numbers and sponsors advertising for the duration of the event in accordance with ISAF regulation 20.4. These items will be supplied free of charge by the Organising Authority at registration.

### 3. ELIGIBILITY AND ENTRY

- 3.1 The Championship is open to all boats of the Melges 24 class that meet with the obligations of the Class Rules and their National Authority, in the case that a National Authority exists.
- 3.2 Eligible boats may enter by completing both the entry form and payment via [www.worlds2010.fi](http://www.worlds2010.fi) before 1<sup>st</sup> of June 2010. After this date entries will be accepted subject to a 30% surcharge.
- 3.3 No entries will be accepted after 30<sup>st</sup> of June 2010.
- 3.4 The Organising Authority will acknowledge complete entries on the official event web site at [www.worlds2010.fi](http://www.worlds2010.fi)

#### **4. CLASSIFICATION**

4.1 The ISAF Sailor Classification Code will apply to teams in the Corinthian Trophy.

Please refer to ISAF's Web site: [www.sailing.org](http://www.sailing.org)

4.2 Competitors shall indicate the classification for each sailor on the entry form if entering for the Corinthian Trophy and the unique ISAF User ID Number

4.3 The closing date for the registration of Corinthian entries shall be as in *3.2 above*.

4.4 Sailors shall hold a valid classification prior to this date that does not expire until after the final day of the regatta and be able to declare their User ID number on the entry form.

4.5 Late entries cannot be considered for this trophy.

4.6 Should a boat whose Corinthian entry has been checked and accepted need to change a crew member between the closing date of the entry and the start of the regatta, the name of the new crew member with their valid User ID number must be submitted to the Organizing Authority for approval by the Chairman of the Jury and the Class Race Coordinator.

4.7 Full details of the Corinthian Trophy can be found in IMCA Championship rules.

4.8 A representative of the ISAF Sailor Classification Commission may be present during registration and may carry out spot checks. Registration of a boat is not complete until the spot checks are completed.

4.9 The Classification Protest Time Limit is the end of protest time on the first day of racing.

#### **5. FEES**

5.1 The Entry Fee will be 750 €. This Entry Fee includes launching at commencement and recovery at conclusion of the Regatta at designated times, berthing for the event, trailer storage and tickets to the principal events (see point 24.6) for all competing crew.

5.2 Entry fees shall be paid via [www.worlds2010.fi](http://www.worlds2010.fi) by completing details on Entry and payment Form. Entries will not be valid until payment is received and confirmed by the OA.

#### **6. QUALIFYING SERIES AND FINAL SERIES**

6.1 If there are more than 100 boats registered then the race committee may decide to divide fleet in two, for a qualifying and final series.

6.2 If a Qualifying Series and Final Series are held, the following will apply:

6.2.1 Maximum of 3 races a day may be sailed with a maximum of 12 races for the regatta.

6.2.2 The regatta will consist of a qualifying series of a maximum of 6 races followed by a final series of a maximum of 6 races.

6.2.3 For the qualifying series, the Race Committee will divide the competitors into four groups of as nearly equal size as possible, which will sail in alternating combinations.

6.2.4 Based on the results of the qualifying series, the fleet will be divided into a Gold Fleet and a Silver Fleet of identical numbers. (in case an odd number the silver fleet is bigger )for the final.

6.2.5 Competitors will be informed in which group they will sail their qualifying series by the close of registration.

## 7. SCHEDULE

7.1 Registration, crew weighing, boat measurement and sail registration will be as follows:

Wednesday 4 <sup>th</sup> of August 2010	10.00 - 20.00
Thursday 5 <sup>th</sup> of August 2010	10.00 - 20.00
Friday 6 <sup>th</sup> of August 2010	10.00 - 18.00

7.2 Pre-event racing schedule:

Thursday 5 <sup>th</sup> of August 2010	Practice races, see notice board
Friday 6 <sup>th</sup> of August 2010	Tune-up races, warning signal at 12.55, 1-3 races scheduled

7.3 World Championship racing schedule:

Friday the 6 <sup>th</sup> of August 2010	Competitors briefing at 18.00
Saturday 7 <sup>th</sup> of August 2010	Warning signal at 11.55
Sunday 8 <sup>th</sup> of August 2010	Warning signal at 11.55
Monday 9 <sup>th</sup> of August 2010	Warning signal at 11.55
Tuesday 10 <sup>th</sup> of August 2010	Warning signal at 11.55
Wednesday 11 <sup>th</sup> of August 2010	Warning signal at 11.55
Thursday 12 <sup>th</sup> of August 2010	Warning signal at 9.55

7.4 Twelve (12) races are scheduled for World Championship

7.5 The O.A. and/or the R.C. reserve the right to modify the programme due to weather conditions or other causes.

7.6 There will be no warning signal on the Thursday 12<sup>th</sup> of August after 14.00 hours.

## 8. MEASUREMENTS

8.1 Each boat shall produce a valid measurement certificate before the close registration as specified in 7.1.

8.2 The Organisers may weigh, measure or inspect any boat and or her equipment and sails before, during or after the races.

8.3 Registration of sails and limitation stamping will take place during periods stated in 7.1 above. **THERE WILL BE NO FACILITIES FOR INITIAL MEASUREMENT.** Sails shall be measured and stamped by an approved measurer before arrival at the Regatta.

8.4 In accordance with rule G3, a boat chartered or loaned for this event may carry national letters or a sail number in contravention of the Class Rules.

8.5 During the regatta checks on conformity with class rules, including measurement requirements may be performed at any time

8.6 A boat will provide a minimum of 2 people to facilitate measurement.

## 9. SAILING INSTRUCTIONS

9.1 The Sailing Instructions will be available after final registration of each boat.

9.2. They will be also posted on the event web site at [www.worlds2010.fi](http://www.worlds2010.fi) when available.

## 10. VENUE

10.1 Attachment 'A' shows the location of regatta venue and Kalev YC Clubhouse

10.2 Attachment 'B' shows the location of the racing areas.

## 11. THE COURSES

The course to be sailed will be windward-leeward configuration with fleet racing. Spreader/offset marks and leeward gates shall be used.

## 12. PENALTY SYSTEM

12.1 Rule 44.1 is changed so that the Two-Turns Penalty is replaced by the One-Turn Penalty.

12.2 Rule 'Appendix P' (Special Procedures for Rule 42) shall apply. P 2.3 is replaced with P 2.2; in case of third or subsequent time during the regatta her penalty shall be to promptly retire from the race.

12.3 Decisions of the jury will be final as provided in rule 70.5.

### **13. SCORING**

13.1 Five (5) races are required to be completed to constitute a series.

13.2 When fewer than six races have been completed, a boat's series score will be the total of her race scores.

13.3 When from six or more races have been completed, a boat's series score will be the total of her race scores excluding her worst score.

### **14. SUPPORT BOATS**

14.1 Support boats shall be identified as decided by the Organisers.

14.2 IMCA Coach and Support boat appendix shall be in operation and attached to this NOR.

### **15. LAUNCHING, RECOVERY AND BERTHING**

15.1 Launching will be available at the following times:

Wednesday 4 <sup>th</sup> of August 2010	10.00 – 21.00
Thursday 5 <sup>th</sup> of August 2010	10.00 – 21.00
Friday 6 <sup>th</sup> of August 2010	10.00 – 18.00

Recovery will be available at:

Thursday 12 <sup>th</sup> of August	After racing – 22.00
Friday 13 <sup>th</sup> August	9.00 – 16.00

NOTE: If a crane is required outside these hours there will be an additional charge of 200€. Maximum time limit for one boat craning shall be 30minutes

15.2 All boats shall be afloat by 18:00 hours on Friday the 6<sup>th</sup> of August.

15.3 Boats shall be kept on the assigned pontoons in the harbour. Fenders and mooring lines will be required.

15.4 Bow numbers will establish the priority or order of berthing assignments, haul out order, and other items at the discretion of the OA.

### **16. HAUL-OUT RESTRICTIONS**

Boats shall not be hauled out during the regatta except with and according to the terms of prior written permission of the race committee.

### **17. DIVING EQUIPMENT AND PLASTIC POOLS**

Underwater breathing apparatus (including snorkels) and plastic pools or their equivalent shall not be used around boats between the preparatory signal of the first race and the end of the regatta.

### **18. RADIO COMMUNICATION**

18.1 Except in an emergency, a boat shall neither make radio transmissions while racing nor receive radio communications not available to all boats. This restriction also applies to mobile telephones.

18.2 Race information will be given on VHF. The channel will be stated in the SI's.

### **19. PRIZES**

The prizes for a single fleet will be given as below. If the event will be a split fleet the prizes will be according to IMCA regatta regulations.

#### Daily Prizes

1<sup>st</sup>, 2<sup>nd</sup> and 3<sup>rd</sup> of each individual race in open division

1<sup>st</sup> of each individual race in Corinthian division

#### Overall Prizes

Open division - prizes for helmsman and each crew member for the top eight boats

Corinthian division - prizes for helmsman and each crew member for the top eight boats

## **20. DISCLAIMER OF LIABILITY**

20.1 Competitors participate in the regatta entirely at their own risk. See rule 4, Decision to Race. The organising authority will not accept any liability for material damage or personal injury or death sustained in conjunction with or prior to, during, or after the regatta.

## **21 INSURANCE**

Each participating boat shall be insured with valid third-party liability insurance with a minimum cover of 1 000 000€ per event or the equivalent.

## **22 TELEVISION & PHOTOGRAPHERS' RIGHTS**

Competitors give absolute right and permission for video footage or photographs of themselves or their boat to be published in any media for press, editorial or advertising purposes.

## **23 CHANGES TO THE NOTICE OF RACE**

23.1 The Organising Authority may change the Notice of Race; see rule 89.2(a). Any such changes will be posted on the regatta web site, [www.worlds2010.fi](http://www.worlds2010.fi)

## **24 FURTHER INFORMATION and KEY CONTACTS**

24.1. For further information about the 2010 World Championship [www.worlds2010.fi](http://www.worlds2010.fi)

24.2. Regatta coordinators,

Mr Tomi Hakola, Chairman, FMF [melges24finland\(at\)gmail.com](mailto:melges24finland(at)gmail.com)

Ms Triin Sepp Local coordinator, KYC [triin.sepp\(at\)gmail.com](mailto:triin.sepp(at)gmail.com)

Mr Mairold Metsaviir, Local Coordinator, KYC

Mr Arto Kiiski Local Coordinator, FMF

Email address for questions and answers: [worlds2010info\(at\)gmail.com](mailto:worlds2010info(at)gmail.com)

24.3. Jury chairman,

Tony O' Gorman (IRL), [tonyogorman\(at\)orange.fr](mailto:tonyogorman(at)orange.fr)

24.5. Principal Race Officer (PRO),

Lars Nyqvist (FIN), [lny\(at\)kolumbus.fi](mailto:lny(at)kolumbus.fi)

24.6. Social Schedule,

Opening ceremony                      Friday 6<sup>th</sup> of August

Regatta dinner/banquet              TBA

Award Ceremony & Party              Thursday 12<sup>th</sup> of August

Additional events will be added

## **25 GPS TRACKING EQUIPMENT SUPPLIED BY THE ORGANIZING AUTHORITY**

25.1 GPS tracking equipment to be supplied by Kalev Yacht Club.

25.2 Shall be used only for PR and marketing purposes, tracking data shall not be used in protest hearings, requests for redresses, or any actions which has an effect on boat's results.

25.3 Shall be on board and switched on while racing.

25.4 Shall be attached to boat according instructions given by Kalev Yacht Club.

25.5 Shall be maintained carefully.

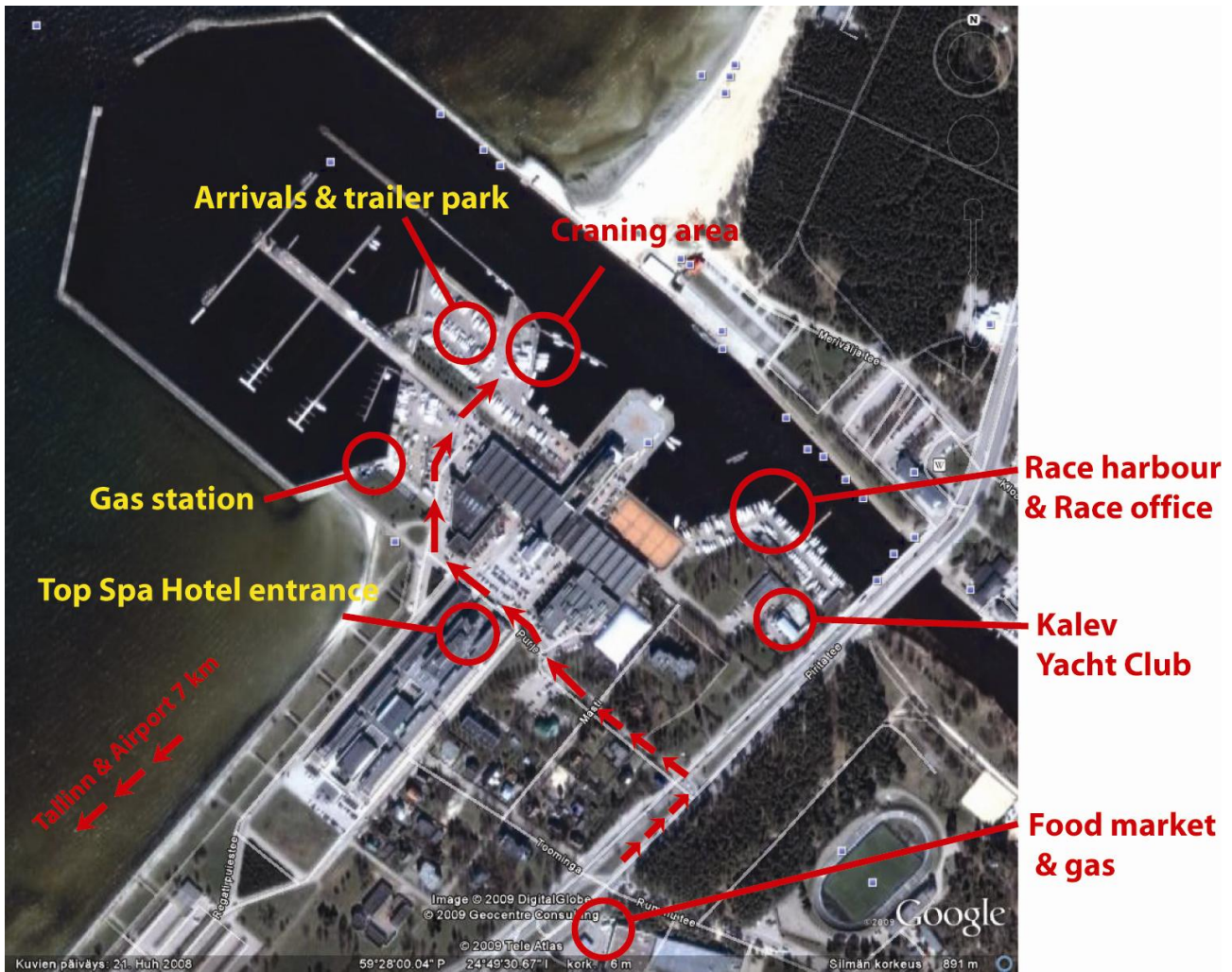
25.6 Must be returned to the Kalev Yacht Club (Race Office) for battery charging as soon as boat returns to harbour.

25.7 The failure of GPS tracking equipment supplied by the Kalev Yacht Club shall not be grounds for redress. This changes RRS 62.1(a).

25.8 The Kalev Yacht Club reserves the right to alter, substitute or withdraw GPS tracking equipment.

25.9 Failure to return the GPS tracking equipment justifies the Service Operator to charge the cost of equipment (720€) from the competitor.

**NOTICE OF RACE ATTACHMENT A.1**  
**Harbour and Clubhouse**



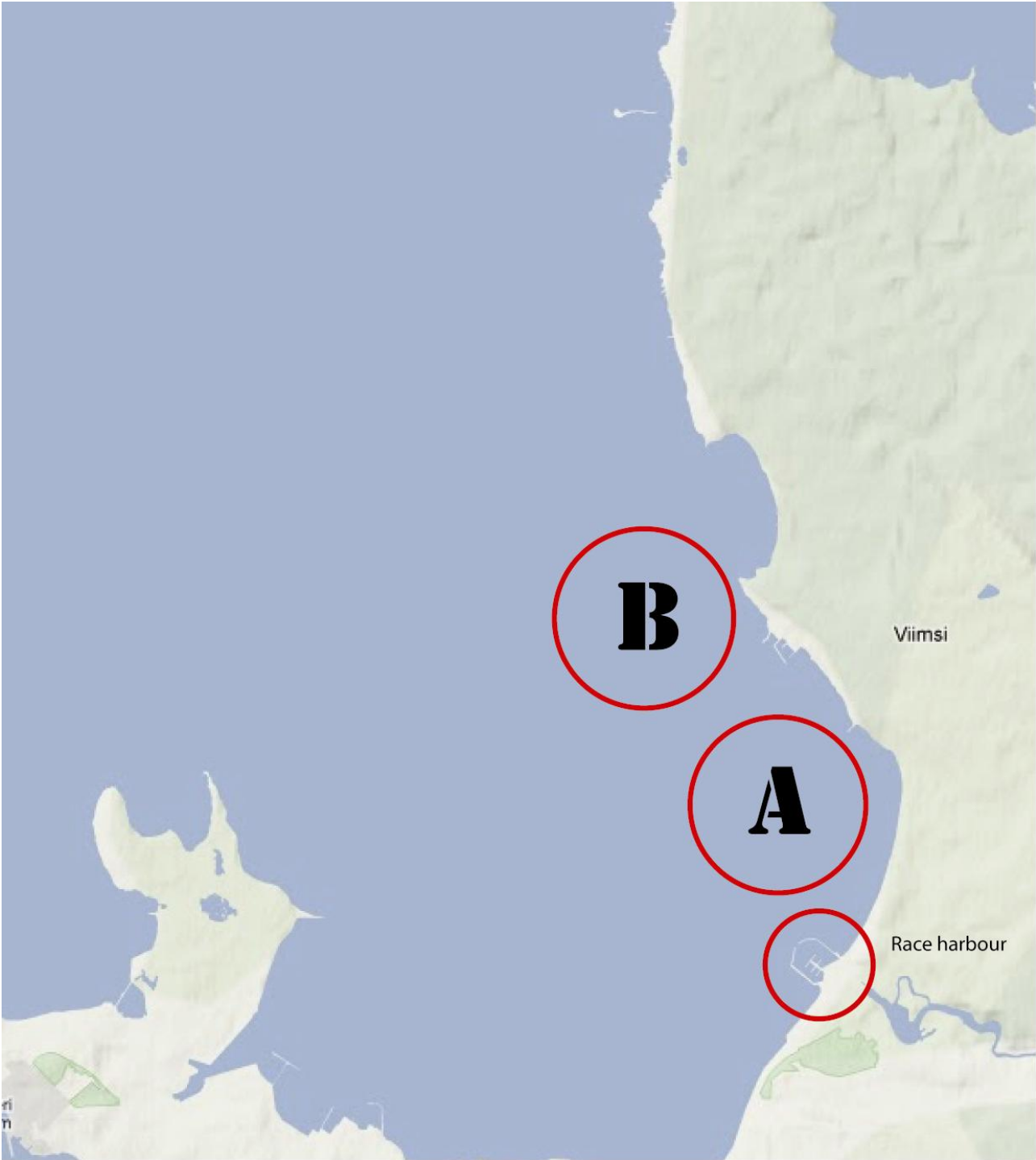


**NOTICE OF RACE ATTACHMENT A.2**  
**Harbour and Clubhouse**



**NOTICE OF RACE ATTACHMENT B**

**Racing Areas**





## **NOTICE OF RACE ATTACHMENT C**

### **COACH, SUPPORT, PRESS & SPECTATOR BOATS**

#### **COACH AND SUPPORT BOATS**

1. Coach and support boats shall register with the race office during registration. They shall declare which boat or boats they are attached to.
2. Coach and support boats shall display a flag, or other identification symbol, as may be required by the race committee.
3. No coach boat or support boat shall pass information in any way to a boat that is racing. Rule 41. Infringements of this will be taken very seriously.
4. Coach and support boats shall communicate only with the boats they are registered to, and only by means of voice between races. Closed VHF or mobile telephone communication is prohibited.
5. All Melges 24 boats shall proceed to the racing area under their own power.
6. There shall be no transfer of any goods or equipment until after the finish of the last race of the day between Melges 24's and their coach or support boats.
7. Coach and support boats shall not go alongside their Melges 24's until after the finish of the last race of the day.
8. Coach and support boats shall keep clear of the racing area at all times during racing.
9. Any coach or support boat that interferes with another competitor or the racing in any way, including creating excess wash, or hinders an official boat carrying out its duties shall have the competitor(s) to which they are attached, liable to a penalty at the discretion of the jury.
10. Any competitor may protest under this attachment.
11. The penalty given by the jury is at their discretion, but shall be applied to the overall score and therefore not discarded.

#### **PRESS AND SPECTATOR BOATS**

1. All Press and official spectator boats shall be registered by the race organising authority during registration.
2. Press and spectator boats shall display any flag, or other identification symbol as may be required by the race committee.
3. The race organisers may appoint one or more photo boats, which will be allowed within the race course. The position of these boats shall not be grounds for redress.
4. Press and spectator boats shall not interfere with the racing in anyway and shall stay at a distance outside the racecourse where their wake causes no problem.